

Technical Guide

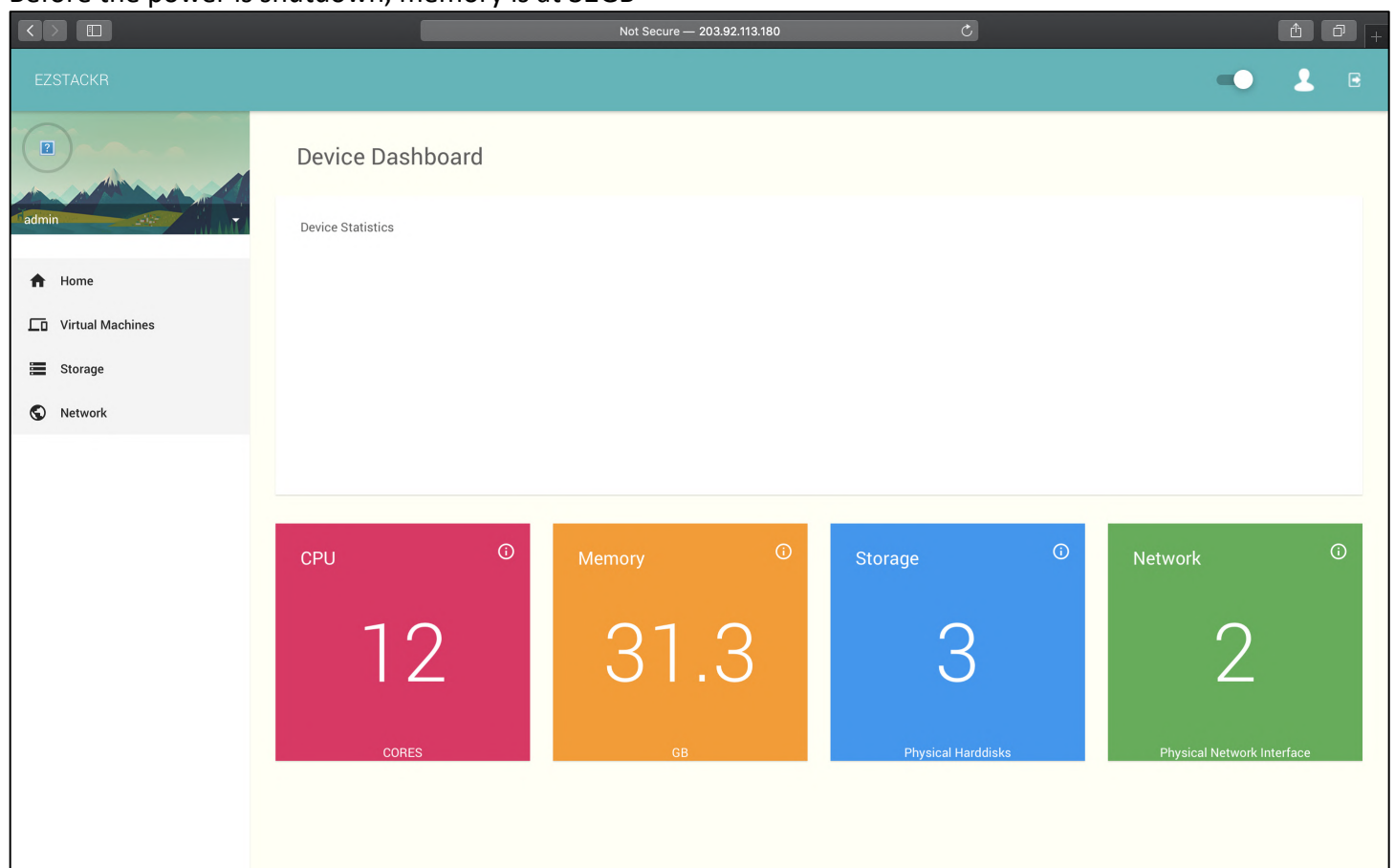
GUIDE #8: What Happens To Ezstackr During a Power Shutdown and Restart?

Introduction:

In this scenario, the objective is to add additional ECC memory to the server. The hardware will be shutdown, memory added and hardware is restarted.

Reviewing Before State:

Before the power is shutdown, memory is at 32GB



Power shutdown is applied to the switch. Ezstackr records its state before shutdown and then shutdown the software.

Supermicro Server Shutdown:

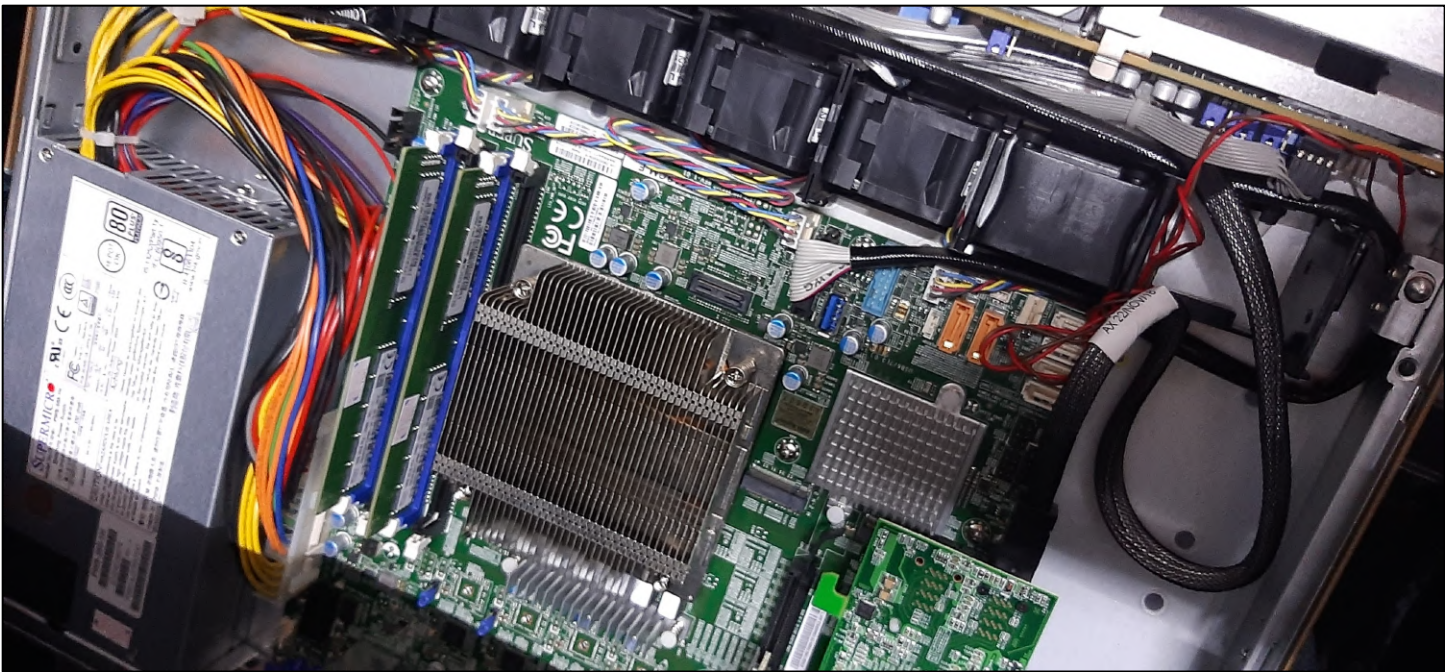


Press the power button once

Memory to be added: Another 32GB of memory modules

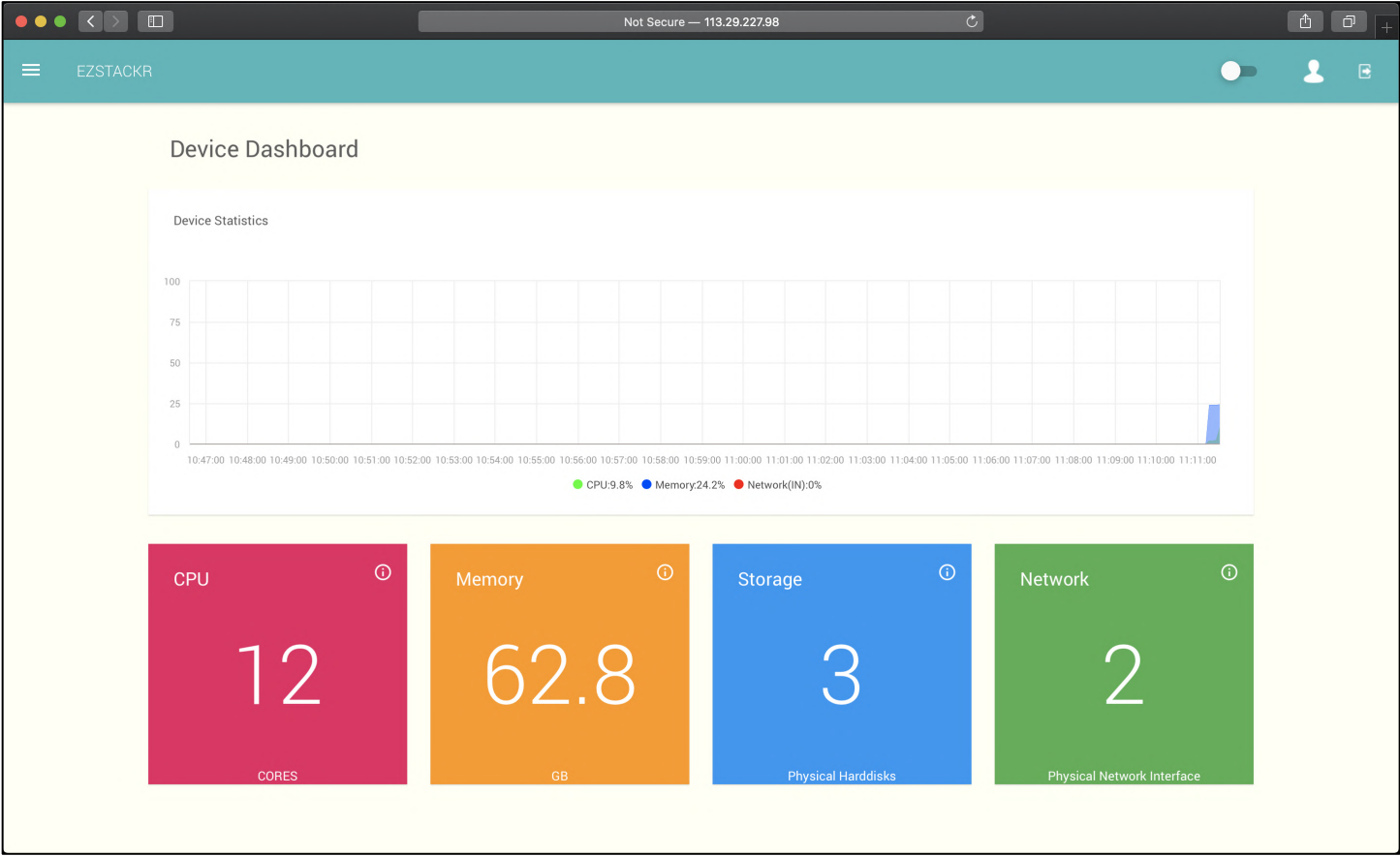


Additional 32GB is added

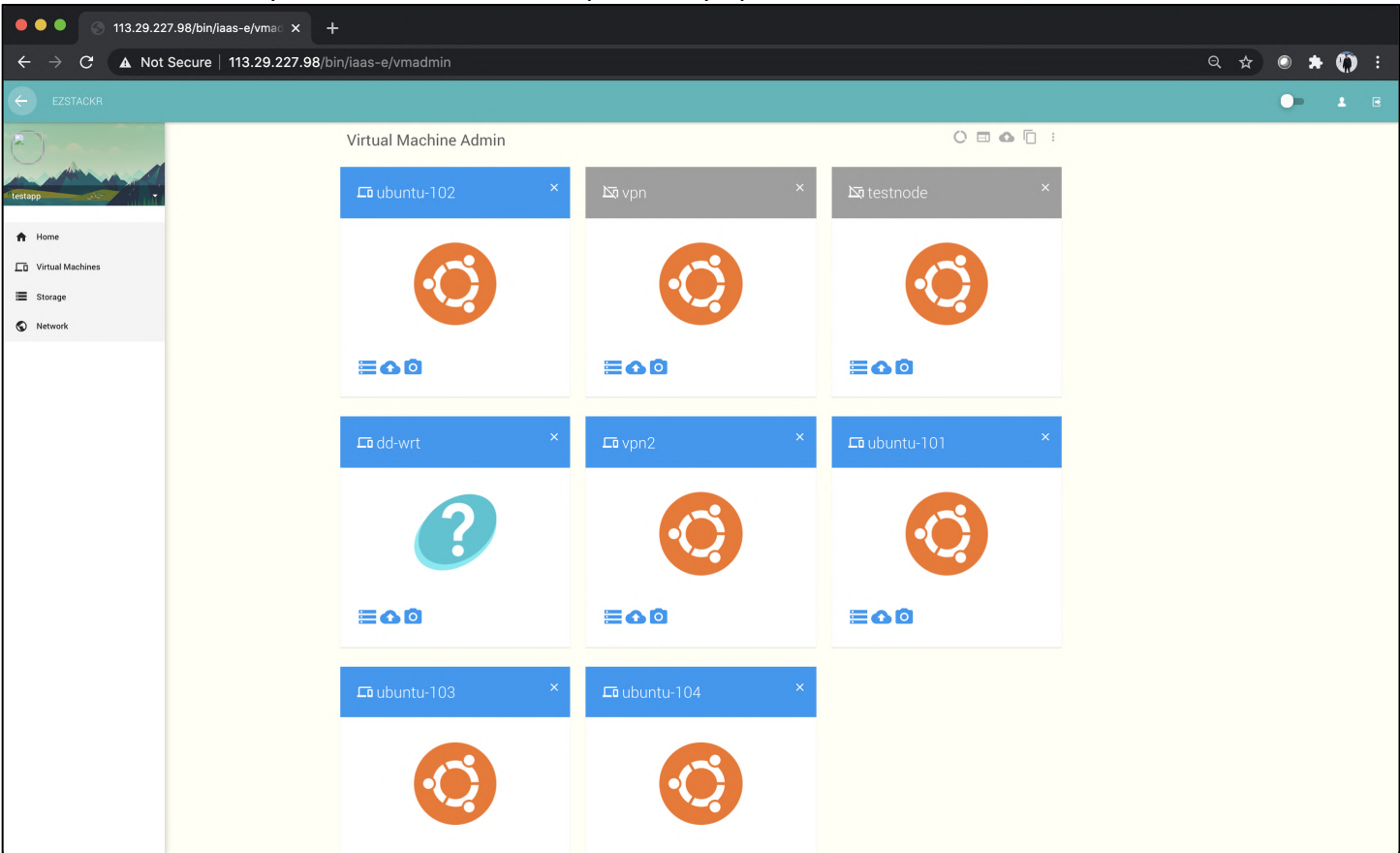


Reviewing After State:

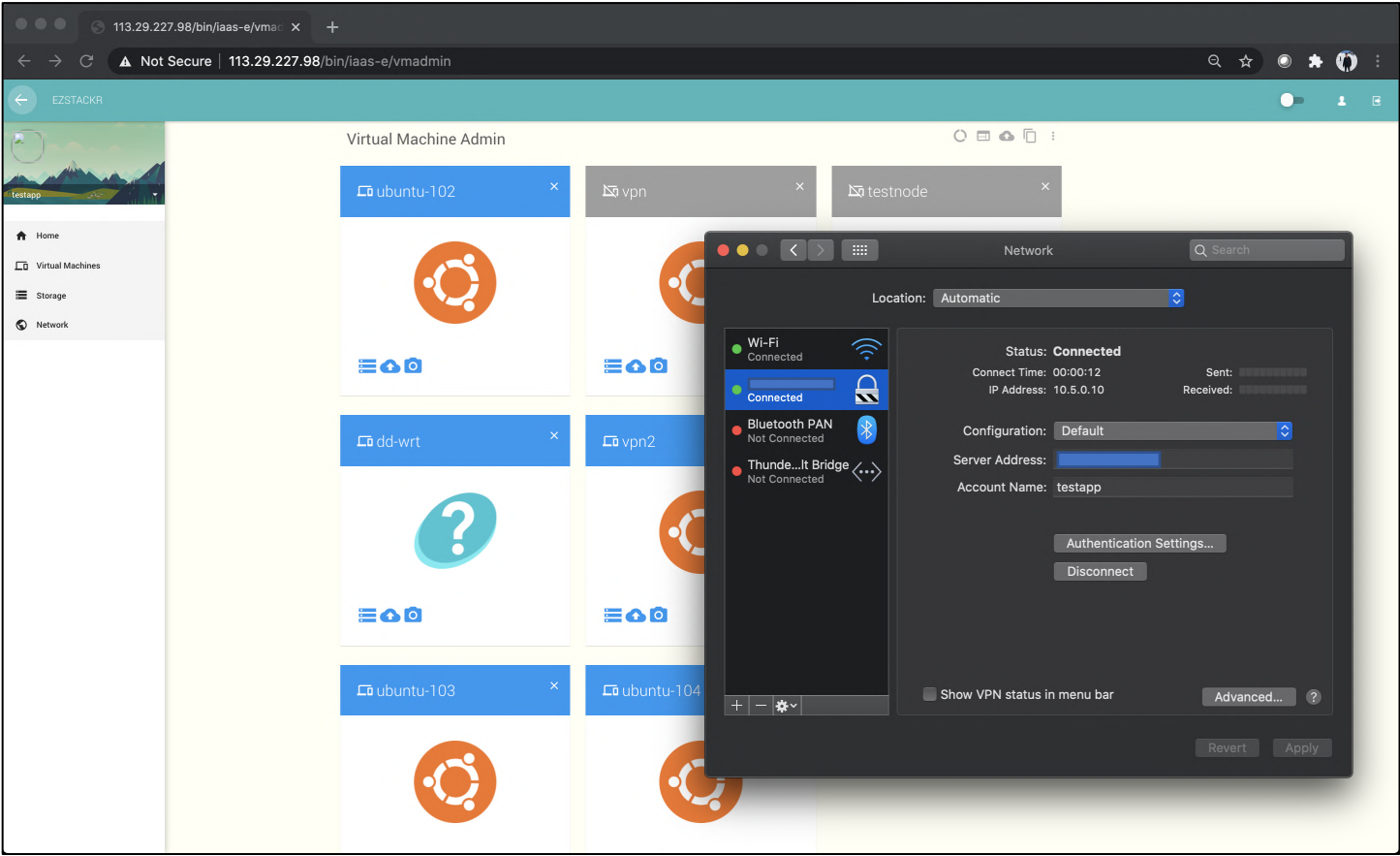
After the power is restarted, memory is at 64GB



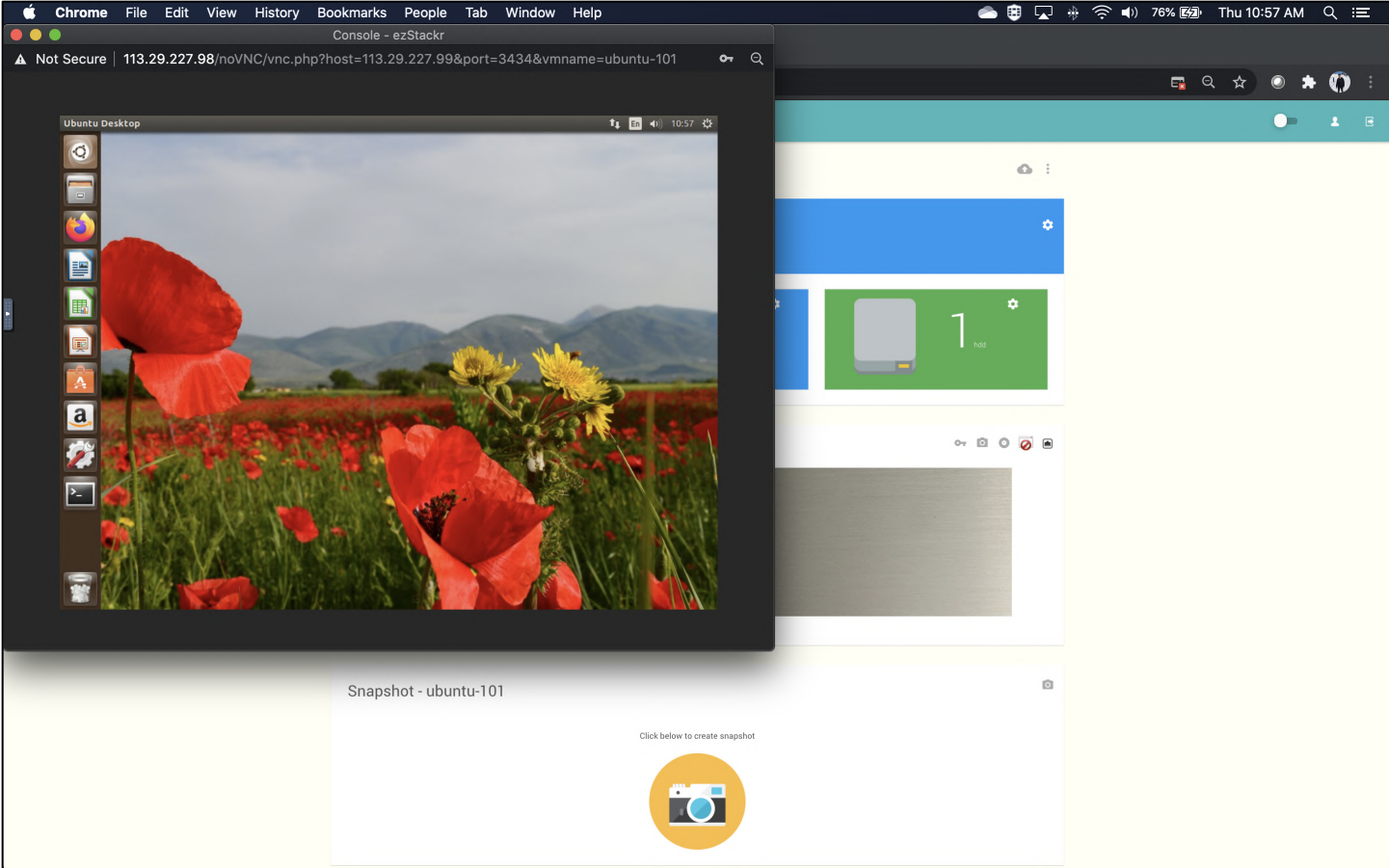
Ezstackr automatically restarts VMs that were previously up before shutdown.



Logging into the Ezstackr VPN services



Opening VMs



Contact Us

LGA Telecom Pte Ltd
33 Ubi Avenue 3
#08-53 Vertex (Tower A)
Singapore 408868

Tel (65) 6892 2308
Email: sales@lgatelecom.net
Website: www.lgatelecom.net

© 2020 LGA Telecom Pte Ltd. All rights reserved.